



GMT MONTHLY MEMBERSHIP PROGRESS REPORT

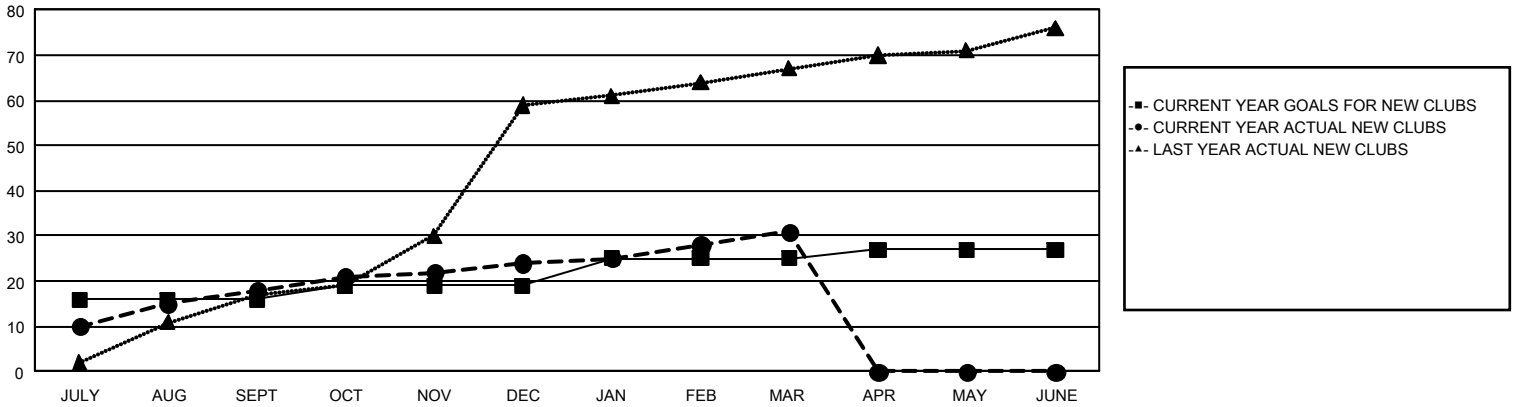
GAT Constitutional Area 5 - MD 300 Taiwan

Results as of: 3/31/2026

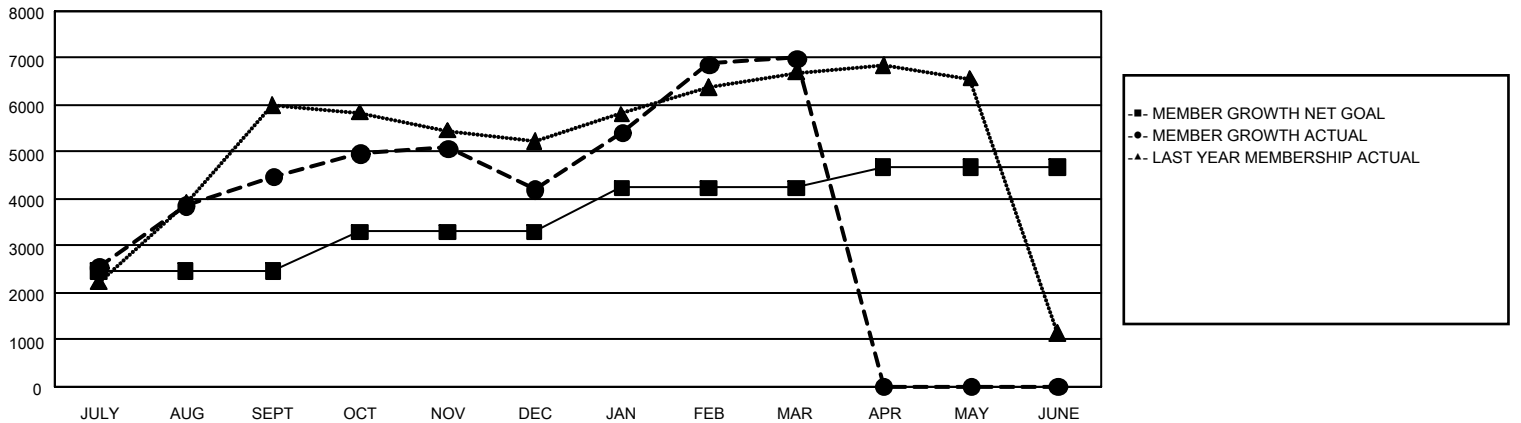
REPORT DOES NOT INCLUDE CLUBS IN UNDISTRICTED AREAS.

Clubs				Members			
RESULTS FOR 2025-2026				RESULTS FOR 2025-2026			
QUARTER	NEW CLUB GOAL	NEW CLUBS	DROPPED CLUBS	QUARTER	MEMBER GROWTH NET GOAL	MEMBER GROWTH ACTUAL	DROPPED MEMBERS ACTUAL (including transfers)
JULY/AUG/SEPT	16	18	3	JULY/AUG/SEPT	2,466	5,683	717
OCT/NOV/DEC	3	6	4	OCT/NOV/DEC	836	1,322	1,464
JAN/FEB/MAR	6	7	3	JAN/FEB/MAR	938	4,313	1,308
APR/MAY/JUNE	2	0	0	APR/MAY/JUNE	430	0	0

GOALS AND ACTUAL NEW CLUBS CUMULATIVE



GOALS AND ACTUAL MEMBERS CUMULATIVE



DROPPED CLUBS: 10	1,122 CLUBS OF 1,291 ADDED 1 OR MORE NEW MEMBERS	<u>GENDER DISTRIBUTION</u> MALE 32,092 (64.82%) FEMALE 17,406 (35.16%)
<u>DROPPED MEMBERS</u> DECEASED 67 CLUB CANCELLED 25 OTHER 3,396 <hr/> TOTAL 3,488	CLICK HERE FOR CUMULATIVE MEMBERSHIP DATA	TOTAL FAMILY UNIT MEMBERS 5,051 FAMILY MEMBERS PAYING HALF DUES 3,295